

airconics

USER MANUAL v1.0

Applicable models: ERV-P15B, ERV-P25B, ERV-P35B,
ERV-P50B, or ERV-P50BHS

Excludes "ION" models with high voltage electro-static dust collection fitted



**Please read this manual in full before using the appliance
or commencing any maintenance**

IMPORTANT!

Please Read Before Starting

This information is provided for use only by users/installers/technicians with regards to Airconics brand residential ERV systems with a model number specified in this user manual and purchased either via Airconics NZ directly or through an authorized reseller/distributor. Airconics NZ carries no responsibility or liability for any system purchased either second hand or outside of its authorized reseller/distributor network, or installed in any manner contrary to those outlined in the corresponding installation manual.

No part of this document shall override any consumer protections as set out under the New Zealand Consumer Guarantees Act

For safe operation & maintenance you must:

- Carefully read this instruction booklet in its entirety before beginning
- End users are only to undertake maintenance tasks if they are able to do so safely
- Disconnect power supply to the appliance before commencing any maintenance and follow the steps exactly as shown
- Any repair or maintenance task that requires access to any wiring or electrical component is to be undertaken by a qualified and registered electrician only
- Pay close attention to all warning and caution notices given in this manual and on the product itself:



WARNING!

This notice and symbol refers to a hazard or unsafe practice which can result in severe personal injury or death



CAUTION

This notice and symbol refers to a hazard or unsafe practice which can result in personal injury or product or property damage



ELECTRICAL HAZARD EXISTS

This notice and symbol refers to an electrical hazard which can result in severe personal injury or death

In Case of Improper Installation, Service or Repair

Airconics NZ and its authorized resellers/distributors shall in no way be responsible for improper installation, maintenance service, or repair, including failure to follow the instructions in this document and in the installation manual. All liability for remediation due to improper installation, service or repair rests solely with the equipment installer/technician or those individuals undertaking the service.

Unsure? Reach out before starting

These instructions are all you need for most circumstances and maintenance conditions. If you require help for a special problem, contact your authorized reseller/distributor or Airconics NZ for additional instructions.

Wiring & Electrical Work



WARNING!



ELECTRICAL HAZARD EXISTS

ELECTRICAL SHOCK CAN CAUSE SEVERE PERSONAL INJURY OR DEATH. ONLY A QUALIFIED, EXPERIENCED ELECTRICIAN IS PERMITTED TO ACCESS ANY ELECTRICAL PARTS OF THIS SYSTEM.

- Do not supply power to the unit unless all wiring and ducting is completed & connected.
- Highly dangerous electrical voltages are used in this appliance. Carefully refer to the wiring diagram and these instructions when wiring. Improper connections and inadequate earthing/grounding can cause accidental injury or death.
- Connect all wiring tightly. Loose wiring may cause overheating at connection points and a possible fire hazard.
- Provide a 10A power outlet to be used exclusively for each unit.
- To prevent possible hazards from insulation failure, the unit must be properly earthed/grounded.
- Check that cabling will not be subject to wear, corrosion, excessive pressure, vibration, sharp edges or any other adverse environmental effects. The check shall also take into account the effects of aging or continual vibration.
- This equipment is strongly recommended to be installed with Earth Leakage Circuit Breaker (ELCB) or Residual Current Device (RCD). Otherwise, it may cause electrical shock and fire in case of equipment breakdown or insulation breakdown.
- Damage to appliance by improper wiring will void warranty.
- No other electrical fitting or equipment is permitted to be connected in any way to the appliance or associated control systems. Integration with any Air Conditioning system is to be via Airconics supplied (or approved - in writing) relay kit.
- If appliance has been powered, power must be disconnected for 5 minutes before opening any cover/lid and before performing any install, service, or repair tasks.

Work in Ceilings & Confined Spaces



WARNING!

- Ensure all persons involved with any manner of work relating to this appliance are trained and competent in safe work practices including; secure/sturdy places to stand/place weight, how to safely climb/crawl through confined spaces and how to mitigate heat exhaustion risks.

Additional Warnings



WARNING!

- This product must not be installed or used in a modified or disassembled condition under any circumstances. Modified or disassembled unit may cause fire, electric shock or injury.
- Airconics do not permit cleaning inside the appliance by users. Engage authorized dealer or technician for internal cleaning. Users are only permitted to perform regular maintenance - cleaning/replacement of filters and cleaning of ERV heat exchanger - if strictly following instructions under maintenance section of user manual.
- In case of malfunction of this appliance, do not repair by yourself. Contact the authorized sales or service dealer for repair information and official Airconics parts supply.
- Do not sit items on top of the appliance, lean or sit on, or place any weight on it.

Additional Cautions



CAUTION

- Do not place hands inside any part of the appliance while it is powered. You may get injured.
- Do not stick any object into the appliance while it is powered. You may get injured and the appliance may be damaged.
- Do not power the unit or operate without all ducting connected in a manner which will prevent persons or foreign objects from accessing any internal part of the appliance.
- Do Not Operate the appliance without filters and ERV heat exchangers installed.

Before Servicing & Repairs



WARNING!



CAUTION

- Contact the sales dealer or service dealer for a repair in the first instance. If additional assistance is required, contact Airconics NZ directly.
- Be sure to isolate power (appliance unplugged, breaker locked out, or mains switched off - not just switched off at socket) and wait at least 5 minutes until it is discharged before performing any service, maintenance or repair task. Follow prove-test-prove protocols.
- Keep your fingers and clothing away from any moving parts.
- Only official equipment, and parts - including filters - provided by Airconics NZ are permitted to be used with the appliance, unless specific written instructions are given by Airconics to use third party parts/components.
- Do Not Operate the appliance without filters and ERV heat exchangers installed.
- Where electrical components are being changed, it is the responsibility of the technician/electrician to ensure they are fit for the purpose and to the correct specification. At all times the Airconics maintenance and service guidelines shall be followed except where technician/electrician believes these may be incorrect, in which case contact Airconics before commencing. If in doubt, contact Airconics for assistance.
- Repair and maintenance to electrical components shall include initial safety checks and component inspection procedures. If a fault exists that could compromise safety, then no electrical supply shall be connected to the circuit until it is satisfactorily dealt with. If the fault cannot be corrected immediately but it is necessary to continue operation, an adequate temporary solution shall be used. This shall be reported to the owner of the equipment so all parties are advised.
- Initial safety checks shall include:
 - That capacitors are discharged. This shall be done in a safe manner.
 - That no live electrical components and wiring are exposed while performing any tasks.
 - That there is continuity of earth bonding.
 - During repairs to sealed or enclosed components, all electrical supplies shall be disconnected from the equipment prior to any removal of covers etc.
 - Particular attention shall be paid to the following to ensure that by working on components, the casing is not altered in any way such that the level of protection is affected. This shall include damage to cables, excessive number of connections, terminals not made to original specification, damage to seals, incorrect fitting of glands, etc.
 - Ensure that appliance and internal component(s) are mounted securely.
 - Ensure that casing, seals or sealing materials have not degraded such that they no-longer serve the original purpose.
 - Replacement parts shall be in accordance with the manufacturer's specifications.
- Clean up and fit all covers, panels and close lid securely before reinstating power supply. Remembering to check that no foreign objects including metal scraps, loose duct work, insulation, offcuts or loose wiring have been left inside the unit. Marking to the equipment continues to be visible and legible. Markings and signs that are illegible shall be corrected.

aircconics

aircconics

aircconics

Contents

	Page
IMPORTANT Please Read Before Starting	1
1. Product Overview & Key Parts Diagram	7-8
2. Opening & Closing The Front Cover/Lid	9
3. Maintenance: Overview & Frequency	10
4. Maintenance: Pre-Filter	11
5. Maintenance: HEPA Filter	12
6. Maintenance: ERV Heat Exchangers	13
7. Maintenance: ION High Voltage Electro-Static Dust Collector	14
8. Operation: 3-Speed Switch	15
9. Operation: WT1 Control Panel	16
10. Operation: When Controlled by Ducted A/C	17
11. Troubleshooting	18
12. 5-Year Warranty Terms & Conditions	19-20
13. Maintenance, Service & Repair Record	21-24

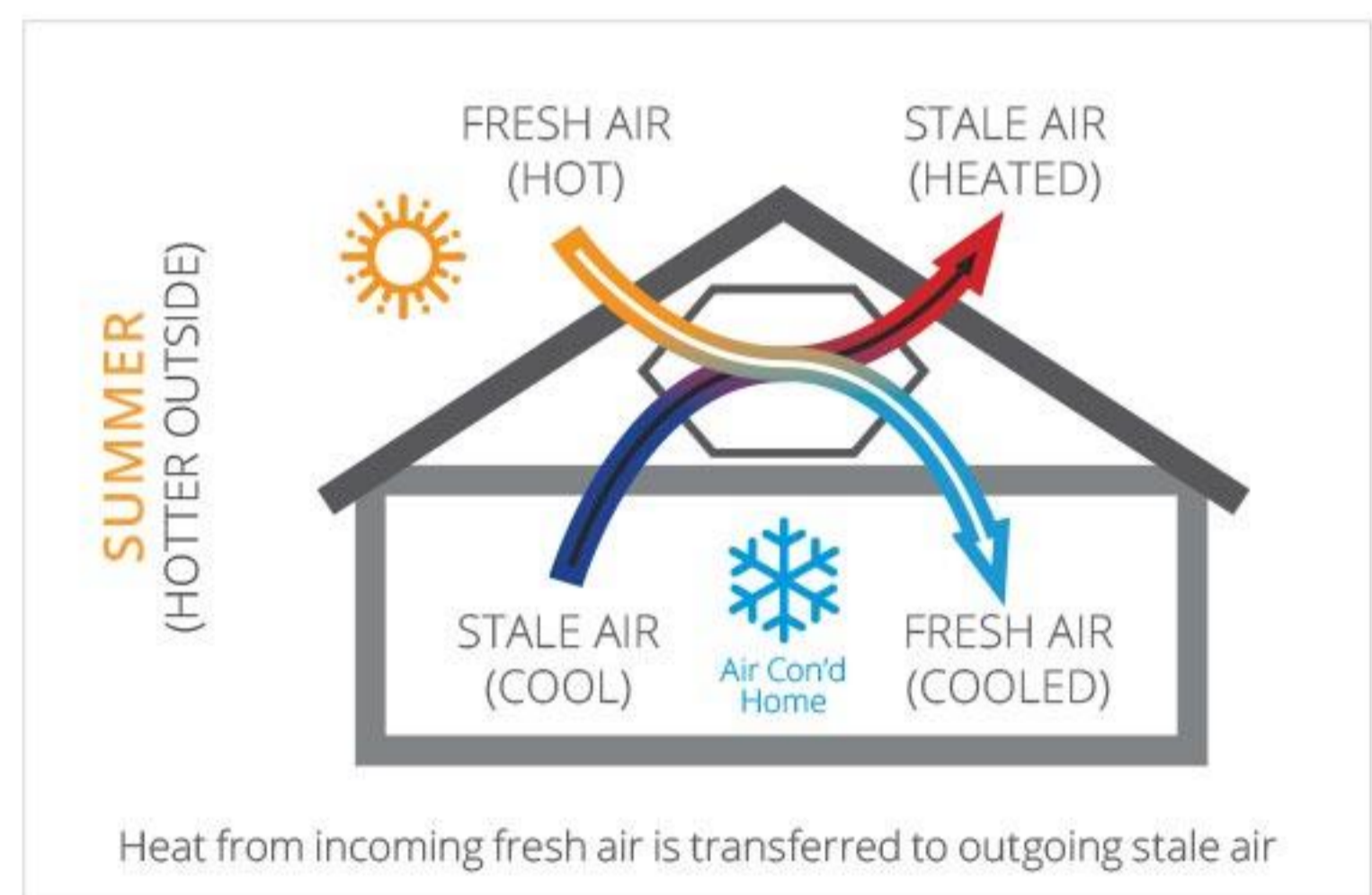
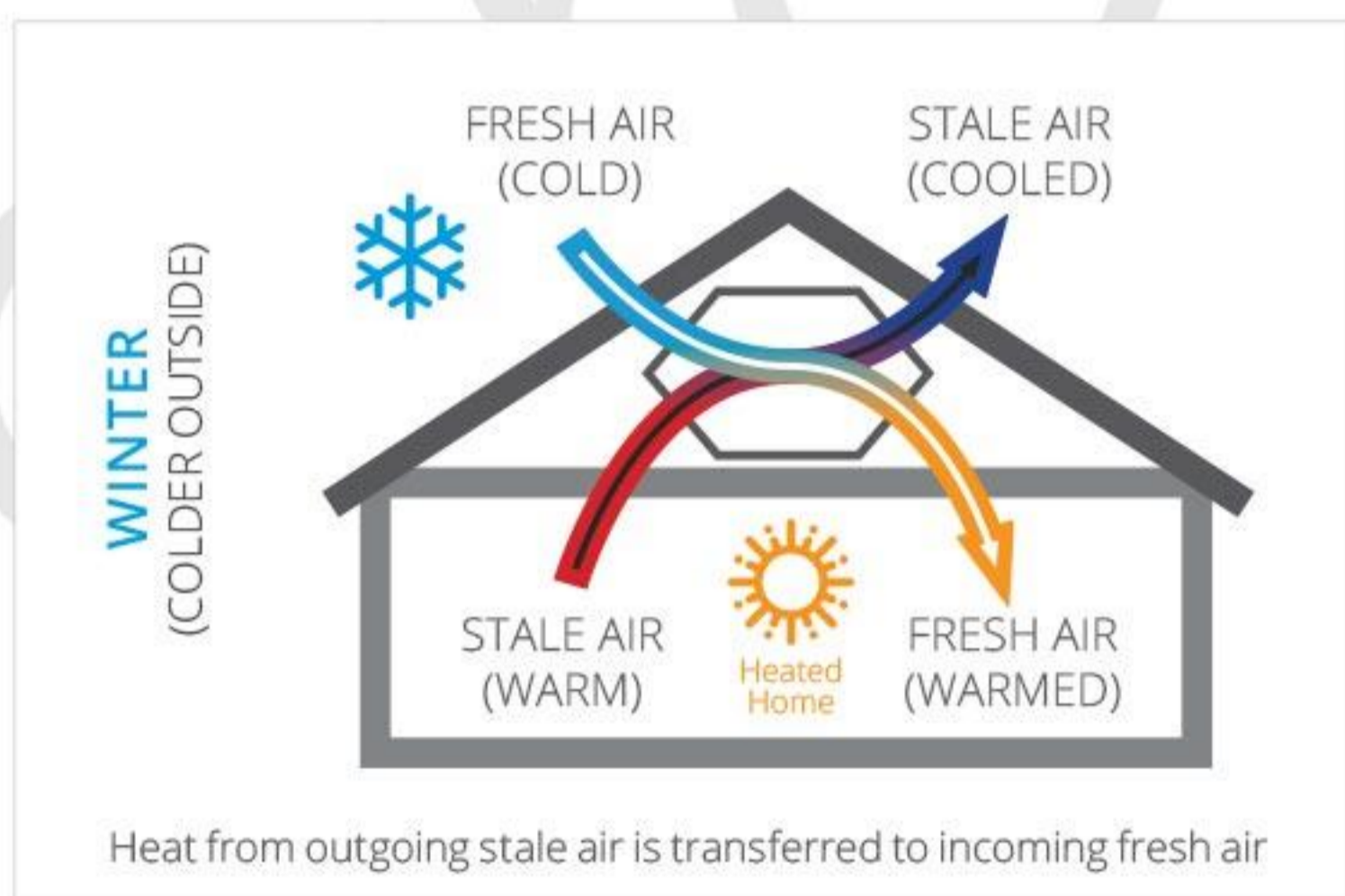
1. Product Overview & Key Parts Diagrams

Overview

Airconics ERV ventilations systems work by extracting equal amounts of stale and damp air from the home, and introducing fresh outside air. This cycle of air through the home improves air quality and results in the removal of moisture and condensation. Our large, resin core heat exchangers work to retain as much of the heat from the outgoing air as possible.

You need to know:

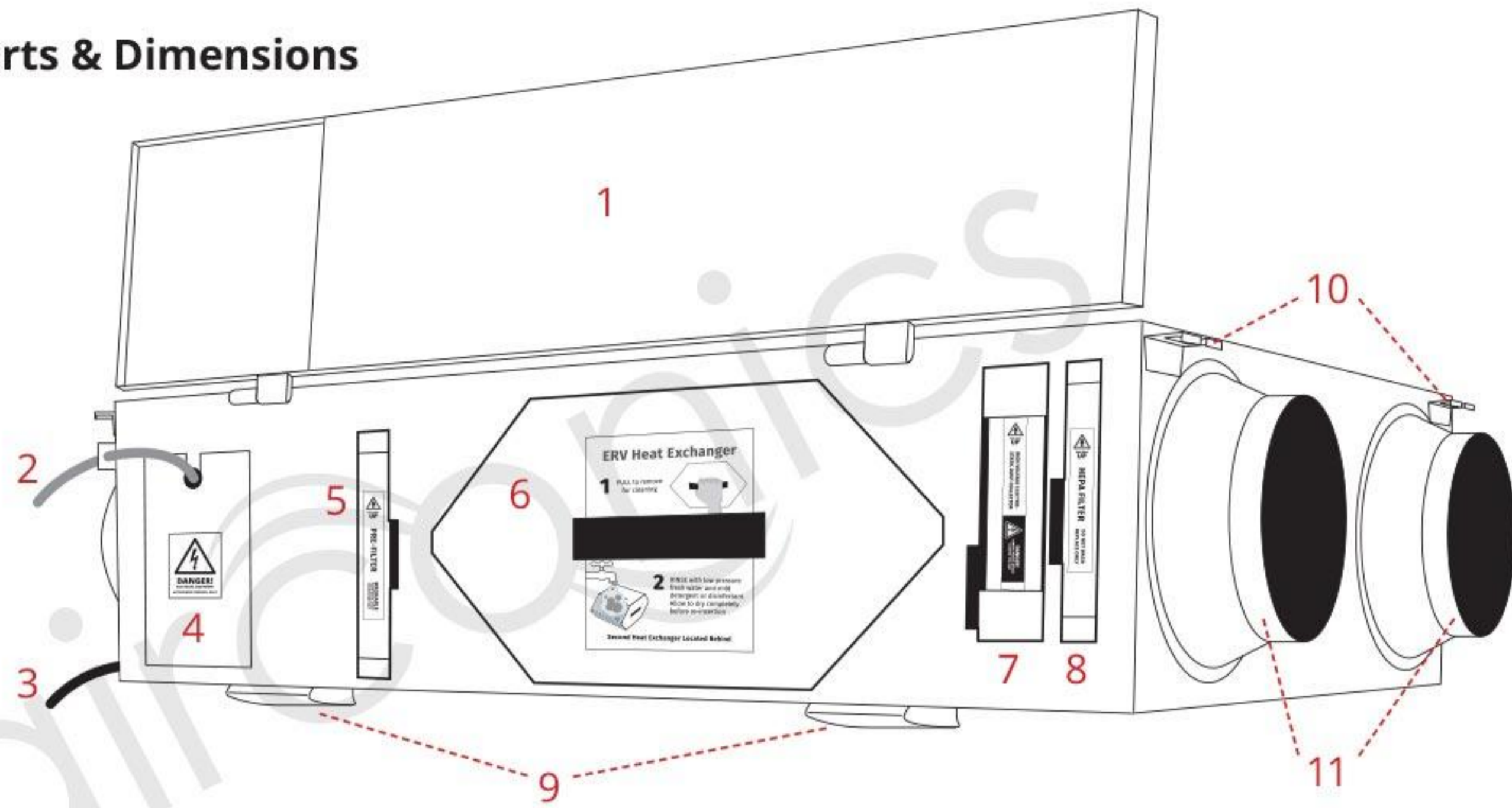
- Two separate air streams:
 1. Extracts stale and moist air
 2. Introduces filtered fresh outside air
- Incoming air is fresh from outside, filtered with HEPA H13 filters to remove dust, pollen & fine particulates
- Meets the NZ building code NZS4303:1990 "Ventilation for acceptable indoor air quality"
- Works well in both older homes and in modern homes with a tight building envelope. By circulating fresh air throughout the home, you can eliminate condensation and improve indoor air quality
- In winter, usable heat is recovered from the extracted air and transferred to the fresh incoming air. In summer, heat is transferred from fresh air to the outgoing stale air
- Airconics balanced pressure ERV "heat recovery" ventilation systems with resin heat exchanger are tested at 86-94% efficiency*



Note: This is a ventilation system, not an air conditioner/heat pump. It facilitates the efficient transfer of heat between incoming & outgoing air. Meaning that when you are heating your home in winter, fresh outside air (cold) will come in pre-warmed by the heat recovered/transferred from outgoing (warm) stale air. It also means when you are cooling your home in summer, fresh outside air (hot) will come in pre-cooled as heat from the incoming fresh air is transferred to the outgoing (cool) stale air. Incoming fresh air will not be the same temperature as extracted stale air.

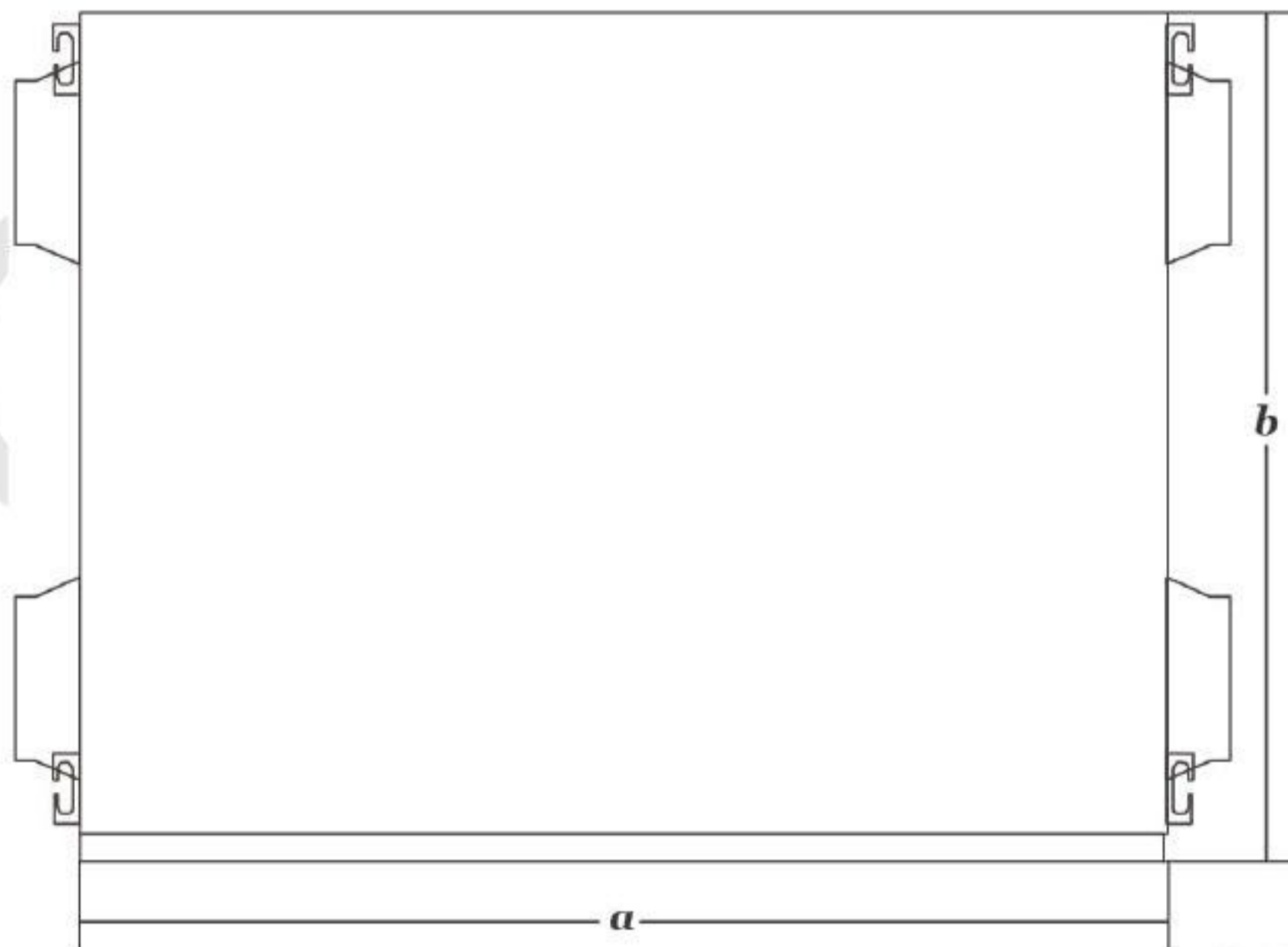
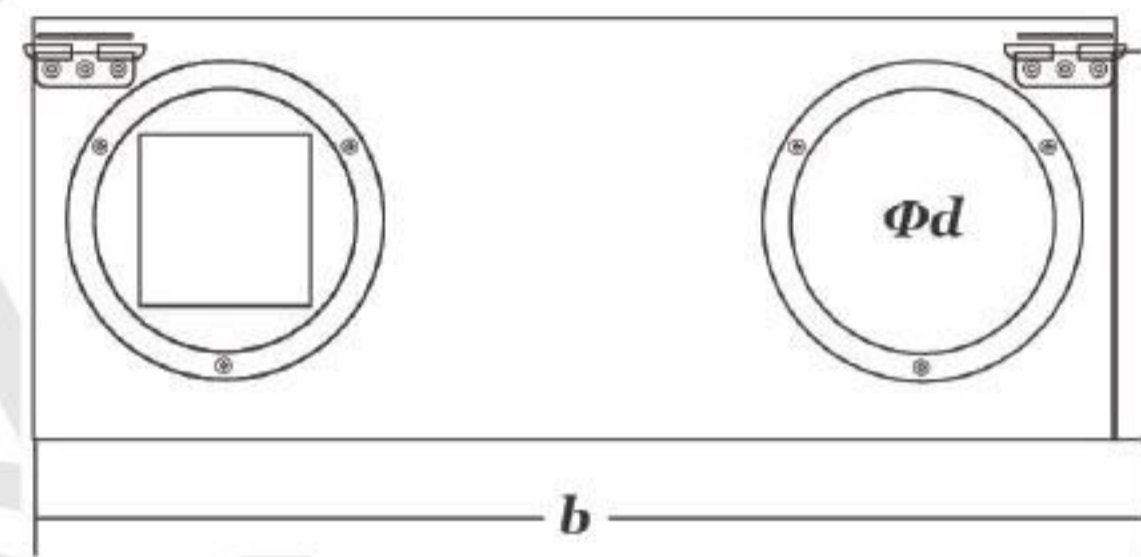
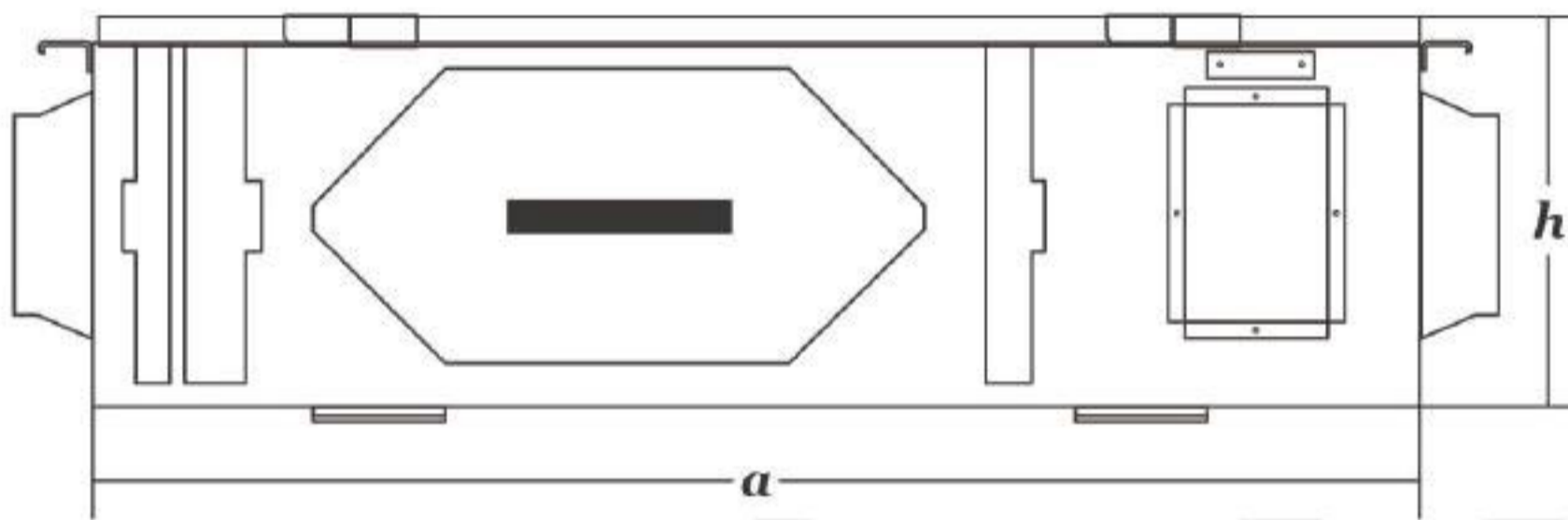
*ERV-P15B & ERV-P25B models are slightly higher efficiency at 88-96% & 87-95% respectively. ERV-P50BHS High Static Pressure model is tested at 84-87% efficiency.

Key Parts & Dimensions



- | | | |
|-------------------------------|-----------------------------------|------------------------------|
| 1 - Front Lid/Cover | 5 - Washable Pre-Filter | 9 - Lid/Cover Locking Clips |
| 2 - Comms/Control Cable | 6 - Washable ERV Heat Exchanger | 10 - Hanging Brackets |
| 3 - Power Cable (3-Pin Plug) | 7 - Electrostatic Dust Collector* | 11 - Duct Connection Spigots |
| 4 - Electrical Terminal Cover | 8 - HEPA Filter | |

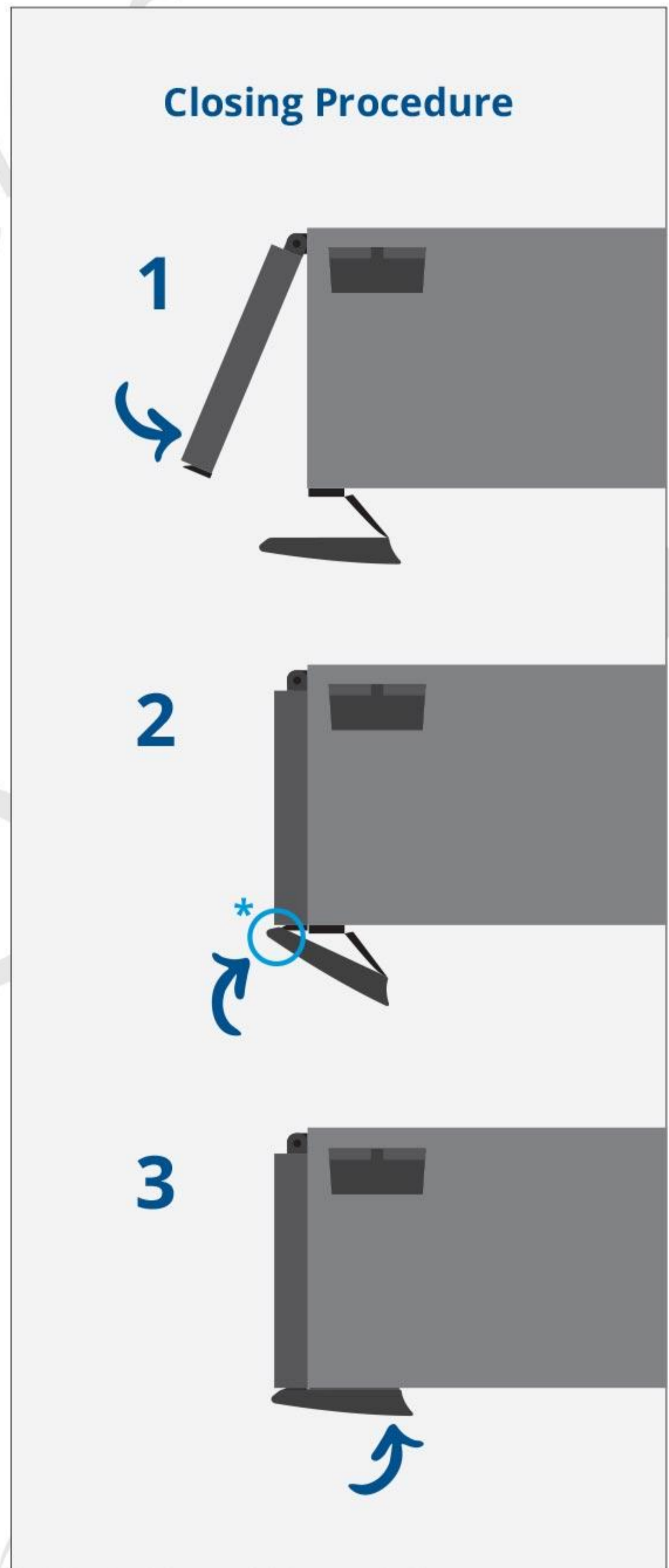
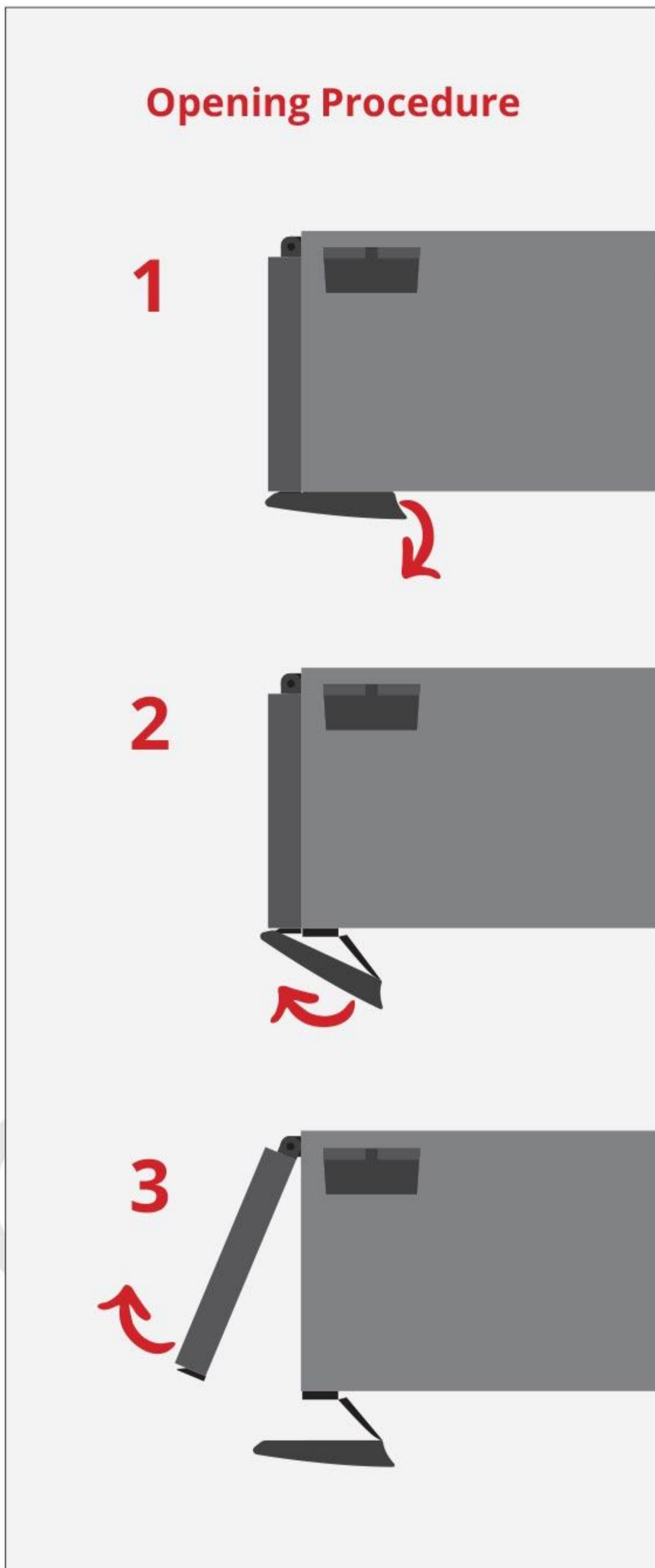
*not fitted to all models



Note:

- In some models the order of electrical terminals, filters and heat exchanger modules is reversed/mirrored
- Unit length (a) excludes depth of removable spigots and mounting brackets

2. Opening & Closing The Front Cover/Lid



IMPORTANT

- * Always ensure clip is correctly aligned with plastic part on lid before closing. Poor alignment will result in broken clip.

3. Maintenance: Overview & Frequency

It is essential to regularly clean filters and ERV heat exchangers to ensure the appliance will continue to operate safely and effectively. Blocked filters may result in damage to fan motors which would not be covered by warranty. Record maintenance in the last section of this manual.



WARNING!



CAUTION

Before Commencing Any Maintenance:

- If accessing ceiling cavity to perform maintenance tasks, ensure all persons doing so are trained and competent in safe work practices including; secure/sturdy places to stand/place weight, how to safely climb/crawl through confined spaces and how to mitigate heat exhaustion risks.
- Be sure to isolate power (appliance unplugged, breaker locked out, or mains switched off - not just switched off at socket) and wait at least 5 minutes until it is discharged before performing any maintenance.
- Only official equipment, and parts - including filters - provided by Airconics NZ are permitted to be used with the appliance, unless specific written instructions are given by Airconics to use third party parts/components.
- Once completed; clean up and fit all covers, panels and close lid securely before reinstating power supply. Remembering to check that no foreign objects have been left inside the unit. Marking to the equipment continues to be visible and legible.
- Do Not Operate the appliance without filters and ERV heat exchangers installed.

Notice to End Users:

End users are permitted to perform these regular maintenance tasks - cleaning/replacement of filters (excluding ION high voltage electro-static dust collector if fitted) and cleaning of ERV heat exchanger - provided they have read this manual in full, wear PPE, and are capable of doing so safely. Airconics do not permit cleaning inside the appliance, or cleaning of ION high voltage electro-static dust collector by users. Engage authorized dealer or technician for ION & internal cleaning if required.

Maintenance Frequency:

Frequency of maintenance will depend on environmental conditions of specific install.

First maintenance check should be performed after 3-months of operation as some locations may have environmental conditions that cause filters to become clogged more quickly. After this a judgement can be made as to ongoing frequency.

In most circumstances pre-filter should be cleaned 6-monthly, with 12-monthly replacement of HEPA filter and cleaning of ERV heat exchanger.

Maintenance Steps:

1. Isolate power (un-plug) and wait 5 minutes
2. Open front cover/lid (procedure can be found on page 9)
3. Remove filter/heat exchanger and clean/replace as detailed on following pages
4. Ensure any washed items are completely dry before reinstating
5. Close front cover/lid (procedure can be found on page 9)
6. Reinststate power supply

4. Maintenance: Pre-Filter

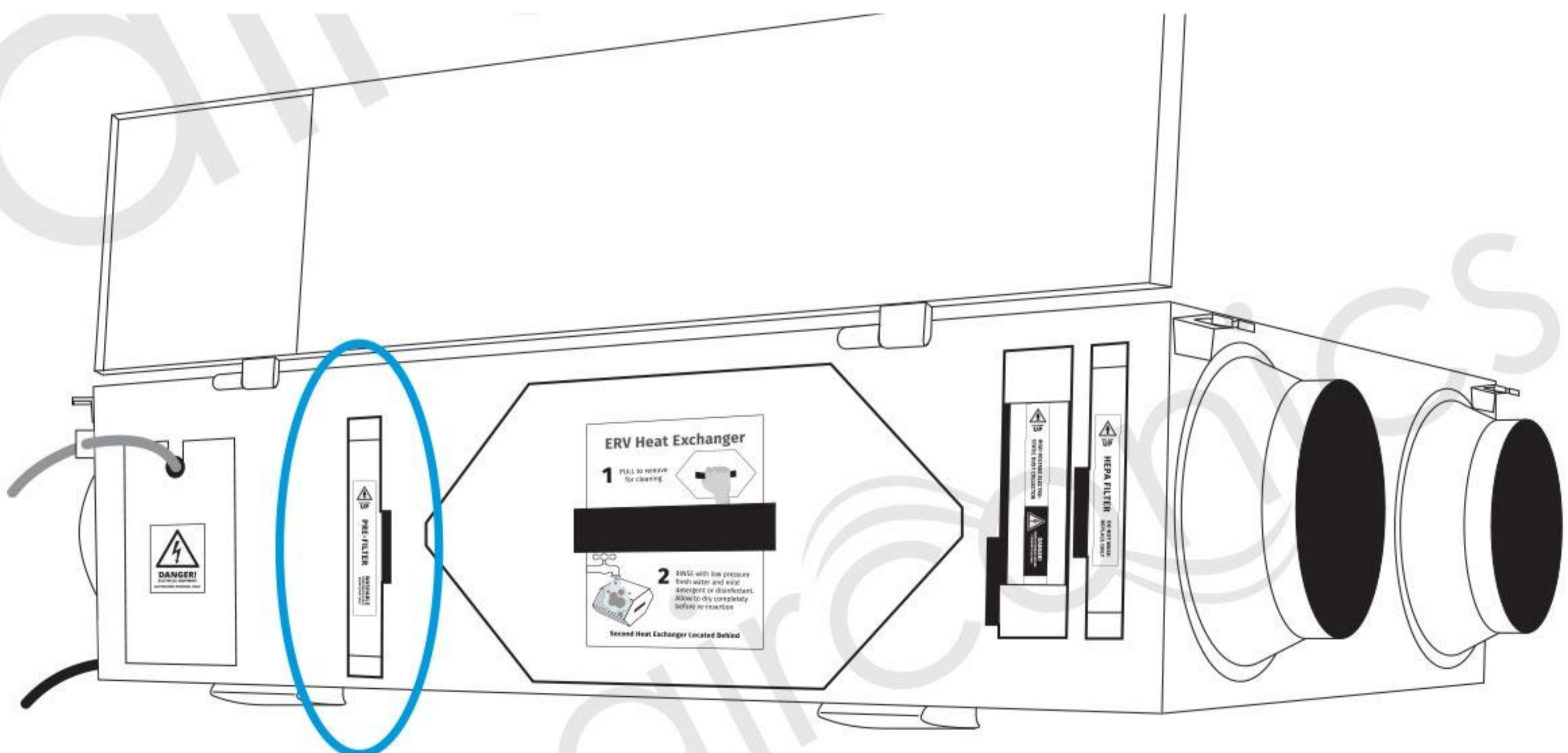
Before accessing or cleaning the Pre-Filter, please ensure you have read “Maintenance: Overview & Frequency” on page 10. Note that the Pre-Filter and HEPA Filter are not covered by warranty as they are consumable parts. Filter degradation and lifespan are affected differently by the environmental conditions of each install. Wear PPE during maintenance.



- This filter is washable but will need replacing if the structure of the filter material changes
- To wash, first rinse with warm running water*
- If additional cleaning is needed the filter can be soaked for 10mins in warm water with a small amount of mild dish soap, then rinsed with warm running water*
- Do not use general household cleaning products (especially surface sprays) as these can leave a residue that may affect performance, impede air flow, or degrade filter material
- If required filter can be sprayed with either Aironics Disinfectant or GreenLeaf Coil & Duct Disinfectant (no alternative brands are recommended)

- Allow to dry completely before reinserting
- Ensure filter is reinserted in the same orientation as it was originally installed
- Only reinstate power supply to the appliance after filters & heat exchangers are reinstated, and covers/lids are properly fitted/latched

* Notice: Warm running water must NOT be above 40°C or pressurized



Pre-Filter Location

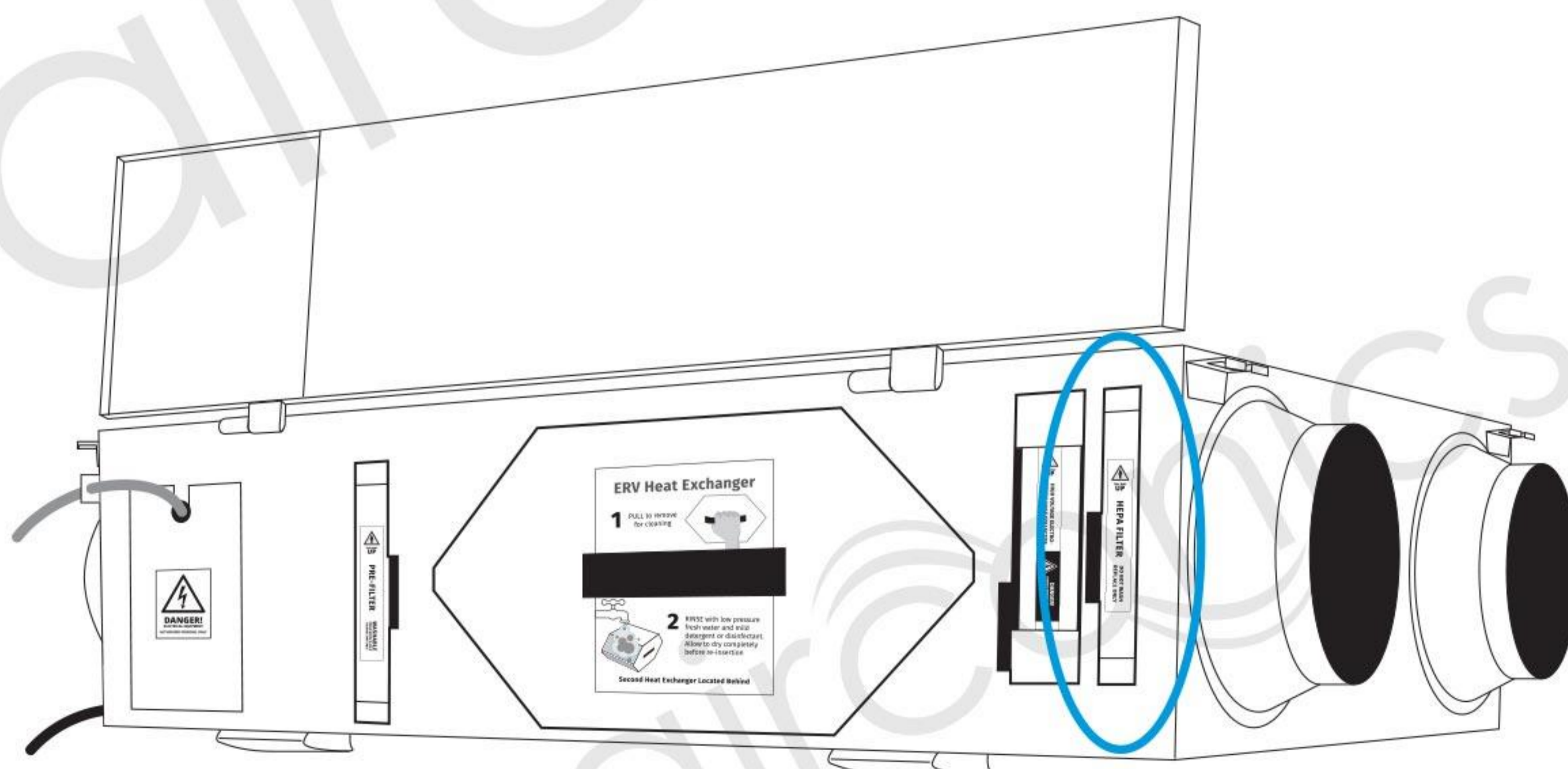
Note: In some models the order of electrical terminals > pre-filter > heat exchanger > ION high voltage electro-static dust collector > HEPA filter is reversed/mirrored

5. Maintenance: HEPA Filter

Before accessing or replacing the HEPA Filter, please ensure you have read "Maintenance: Overview & Frequency" on page 10. Note that the Pre-Filter and HEPA Filter are not covered by warranty as they are consumable parts. Filter degradation and lifespan are affected differently by the environmental conditions of each install. Wear PPE during maintenance.



- This filter is not washable - replace with a genuine Airconics supplied HEPA filter only
- HEPA filter lifespan will vary from install to install based on environmental conditions (amount of fine particulates, dust & pollen in the air)
- Filter should be checked 3-months after install to assess how clogged it is and plan a maintenance schedule
- Replacement in most situations will be 12 monthly, however some environments may require much more frequent replacement
- Only reinstate power supply to the appliance after filters & heat exchangers are reinstated, and covers/lids are properly fitted/latched



HEPA Filter Location

Note: In some models the order of electrical terminals > pre-filter > heat exchanger > ION high voltage electro-static dust collector > HEPA filter is reversed/mirrored

6. Maintenance: ERV Heat Exchangers

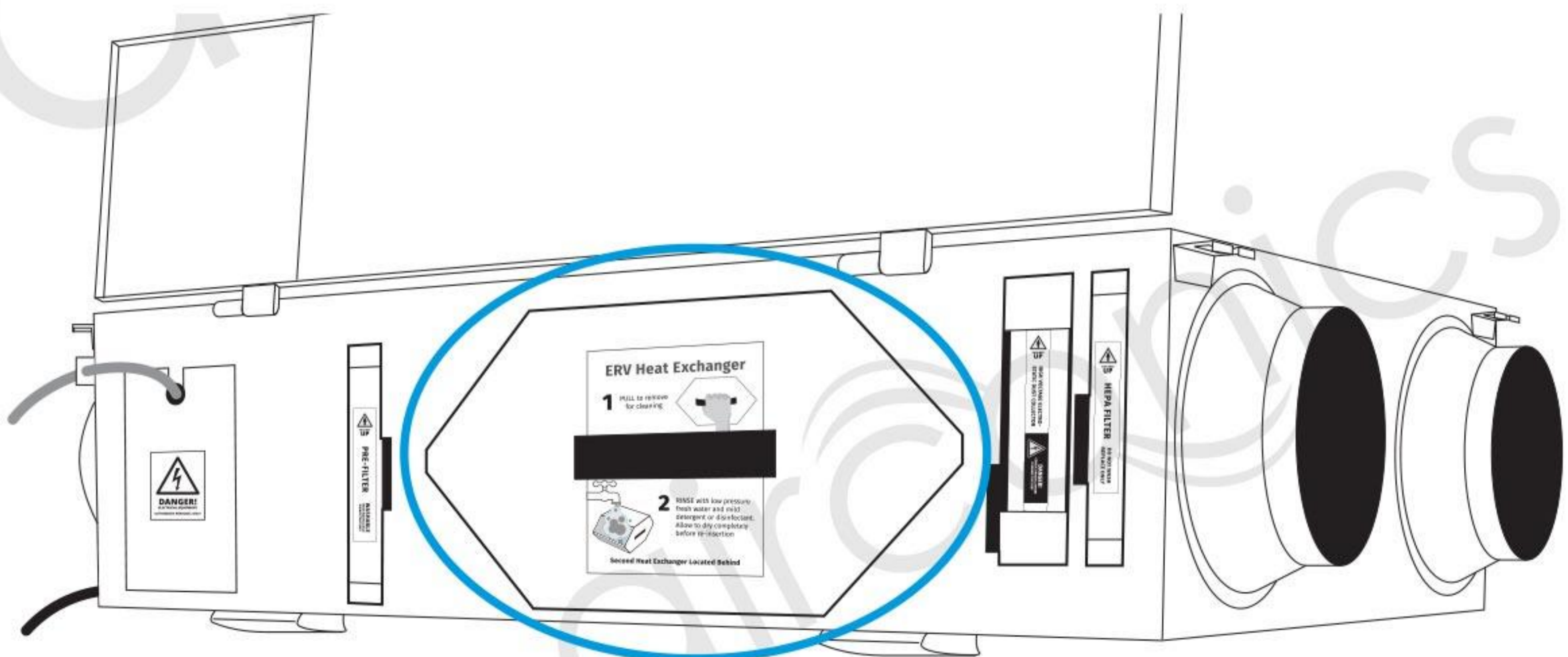
Before accessing or cleaning the ERV Heat Exchangers, please ensure you have read “Maintenance: Overview & Frequency” on page 10. Note that the heat exchangers are made with delicate, fine layers of resin which may stiffen over time and should be handled gently. Damage caused by rough handling is not covered by warranty. Wear PPE during maintenance.



- To wash, first rinse with warm running water*
 - If additional cleaning is needed the heat exchangers can be soaked for 10mins in warm water with a small amount of mild dish soap, then rinsed with warm running water*
 - Do not use general household cleaning products (especially surface sprays) as these can leave a residue that may affect performance, impede air flow, or degrade heat exchanger
 - If required it can be sprayed with either Airconics Disinfectant or GreenLeaf Coil & Duct Disinfectant (no alternative brands are recommended)
 - Allow to dry completely before reinserting
 - Ensure heat exchangers are inserted in the same orientation as originally installed
- Only reinstate power supply to the appliance after filters & heat exchangers are reinstated, and covers/lids are properly fitted/latched

* Notice: Warm running water must NOT be above 40°C or pressurized

Note: Second heat exchanger is located behind first. Heat exchangers may require a “wiggle” while sliding out as the rivets around the housing can catch slightly on the inside edges of the appliance case.



ERV Heat Exchangers Location

Note: In some models the order of electrical terminals > pre-filter > heat exchanger > ION high voltage electro-static dust collector > HEPA filter is reversed/mirrored

7. Maintenance: ION High Voltage Electro-Static Dust



WARNING!



CAUTION



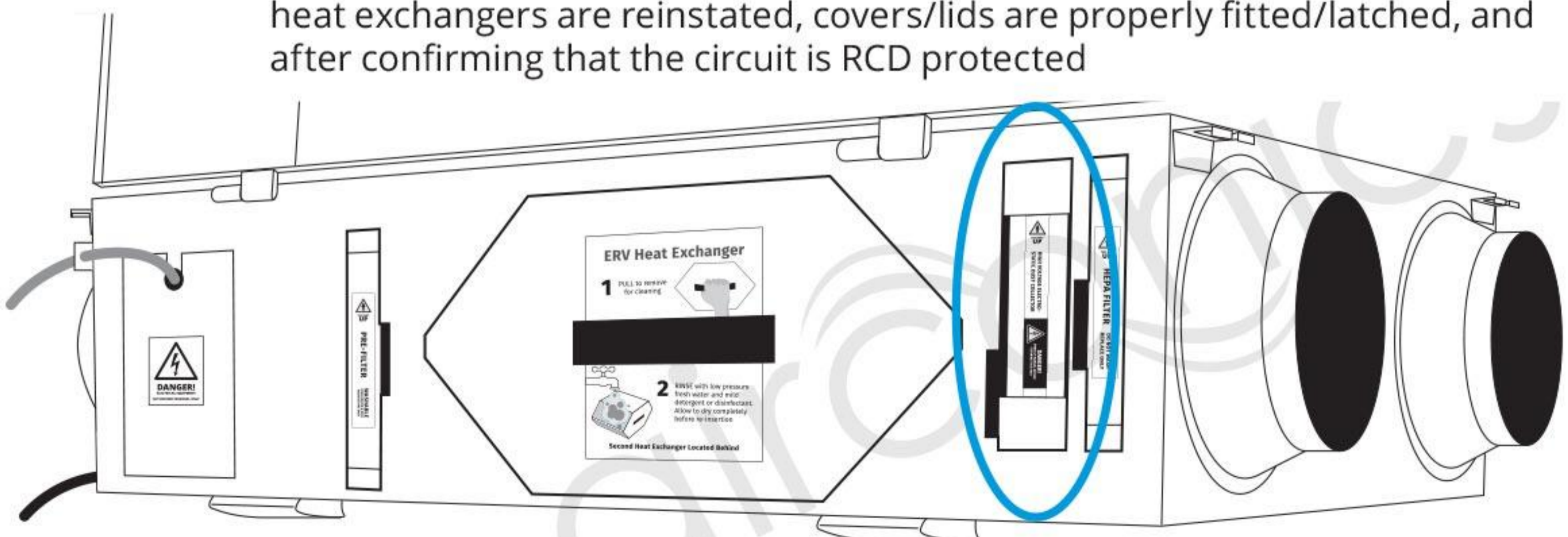
ELECTRICAL HAZARD EXISTS

ION High Voltage Electro-Static Dust Collector is NOT permitted to be cleaned by end users. The information on this page is provided for installer/technician servicing only. Please ensure installer/technician read "Maintenance: Overview & Frequency" on page 10. Wear PPE during maintenance.



Note: This ION High Voltage Electro-Static Dust Collector is only installed in some models. Models containing this ION module must be installed on a dedicated 10A RCD protected circuit. If not RCD protected, disconnect power supply and rectify before reinstating.

- ION Dust Collector maintenance frequency will vary from install to install based on environmental conditions (amount of fine particulates, dust & pollen in the air)
- ION Dust Collector should be checked 3-months after install to assess how dirty it is and plan a maintenance schedule
- Cleaning in most situations will be 12 monthly, however some environments may require much more frequent cleaning
- Ensure power is isolated for 5 minutes before removal
- Carefully slide the ION module out and unplug it
- To clean, first dust the sides of the module with a soft dry brush
- Then blow compressed air through it to remove internal dust
- Visually confirm that the fine metal pins inside are still straight and have not been bent or are near the surrounding metal parts - straighten if needed
- Plug the ION module back in, taking care to maintain correct polarity
- Only reinstate power supply to the appliance after ION module, filters and heat exchangers are reinstated, covers/lids are properly fitted/latched, and after confirming that the circuit is RCD protected



ION Dust Collector Location

Note: In some models the order of electrical terminals > pre-filter > heat exchanger > ION high voltage electro-static dust collector > HEPA filter is reversed/mirrored

8. Operation: 3-Speed Switch



3-Speed Switch is the most simple control option for operating an Airconics ERV ventilation system.

Unit is either Off, or On in the fan speed selected by the switch.

Sometimes this switch is used in conjunction with a ducted air-conditioner integration kit. Read more about this on page 17.

As there is no filter reminder function, be sure to perform regular filter cleaning and maintenance procedures. These can be found on pages 10-14 of this user manual, and in the installation manual.

9. Operation: WT1 Control Panel



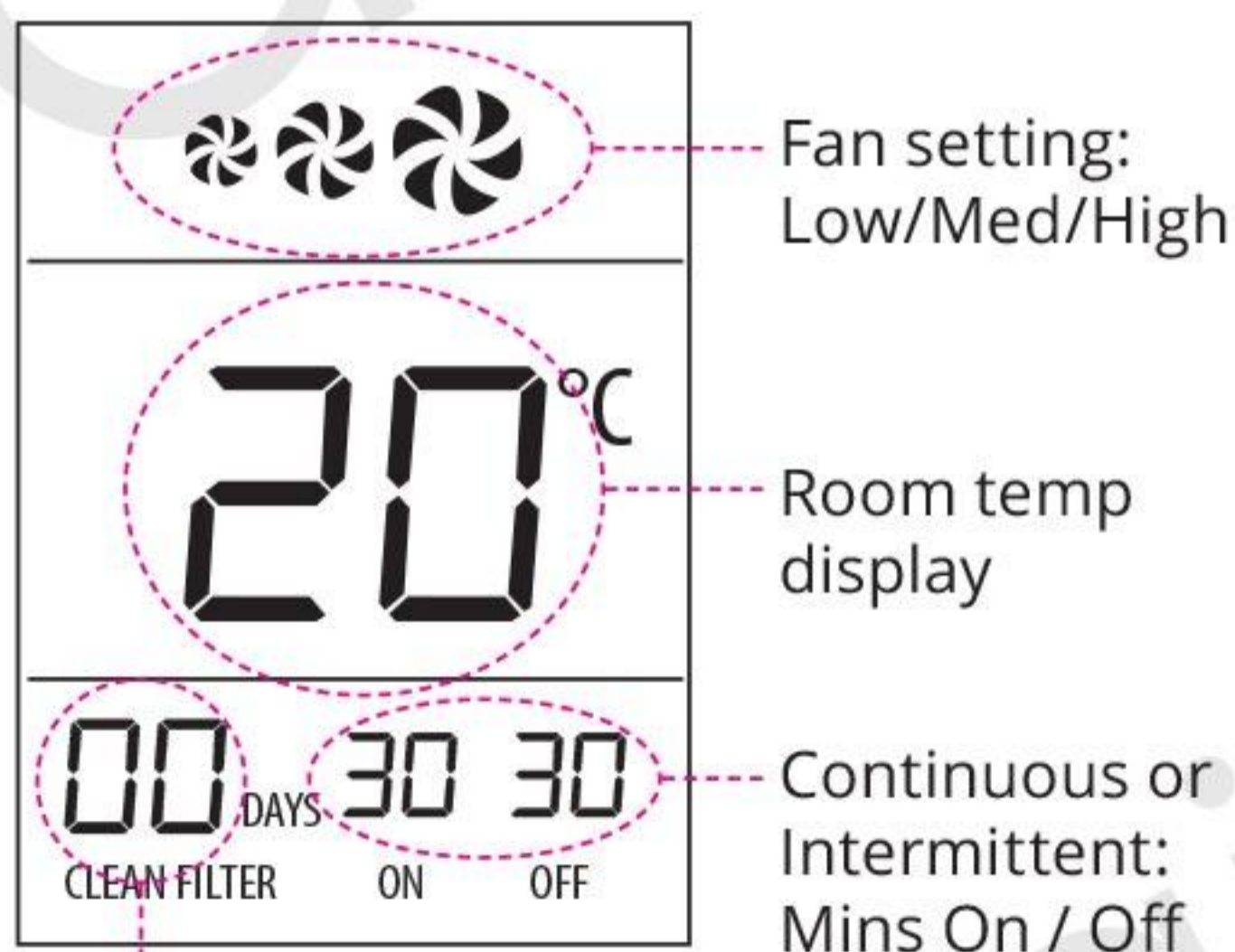
WT1 is a simple wall control panel with room temperature display for operating an Airconics ERV ventilation system.

- Allows control of appliance fan speed
- Displays room temperature (sensor in wall control panel)
- Set filter cleaning reminder (up to 99 days)
- Displays number of days operating since last filter clean reminder
- Timer function enables intermittent operation of appliance (on for XX mins, off for XX mins, repeats)

Button Description:

- ▲ Adjust Fan Speed or Setting Up / Increase
- ▼ Adjust Fan Speed or Setting Down / Decrease
- ⚙ Settings
- 📖 Reset Filter Reminder
- ⏻ Power On / Off

Screen Display:



Days running since last filter reminder

Fan Speed Adjustment:

- Press ▲ or ▼ to increase/decrease

Continuous or Intermittent Operation:

- Press ⚙, the numbers above "On" will begin to flash - pressing ▲ or ▼ will adjust number of minutes unit will run
- Press ⚙ again, numbers above "Off" will begin to flash - pressing ▲ or ▼ will adjust number of minutes unit will turn off (switch to stand-by) before running again for set number of "On" minutes
- If "Off" minutes is set to 00, unit will run continuously regardless of "On" minutes setting

Filter Reminder Adjustment:

- Press ⚙ 3 times until numbers in front of "Days" are flashing - pressing ▲ or ▼ will adjust the number of days (up to 99) before the control panel flashes "Clean Filter" reminder

Clear Filter Reminder Message:

- Be sure to follow maintenance guidelines on pages 10-14
- To clear the flashing "Clean Filter" reminder, press and hold 📖 for approximately 3 seconds

10. Operation: When Controlled by Ducted A/C

It is possible to control the Airconics ventilation appliance from the control panel of some models of ducted air conditioner (A/C). Your installer will use a "Ducted A/C Integration Relay" to allow the A/C to switch the ventilation system on/off.

If your ventilation system has been configured this way, there will typically be a setting in the air conditioner control panel called "Ventilation" that needs to be enabled/tured on. The installer should enable this for you, but you can also consult the air conditioner manual on where to locate this setting.

- With the ventilation setting enabled, the Airconics ventilation appliance will operate when the A/C is operating
- If heating or cooling is not required, you can use the "Fan Only" mode on the A/C control panel to ventilate the home
- As there is no filter reminder function, be sure to perform regular filter cleaning and maintenance procedures - found on pages 10-14 of this user manual, and in the installation manual
- In most cases the installer will select the most suitable fan speed during install and the ventilation appliance will use that set speed whenever it is operating - to change the fan speed requires the installer to alter the wiring
- In some circumstances it is also possible for the installer to install the 3-speed switch, allowing control of the speed. If installed, this switch is unlikely to be used frequently so may be installed in a discreet location

Airconics recommend making notes about the integration method here for future reference

Ducted A/C Integration Configuration:

1. Selected Fan Speed (tick) LOW MED HIGH

or, 3-Speed Switch installed in:
(write location of switch)

2. Ventilation Setting in A/C Control Panel can be accessed by:
(write method/path to find setting)

11. Troubleshooting

Checking if filters or heat exchangers need cleaning is permitted for end users provided they have read the maintenance section of the installation or user manual and are competent to perform the maintenance safely. All other checks are to be performed by an installer/technician, not by the end user. Read installation manual in full before commencing any tasks and follow all guidelines, cautions, & warnings.

No air flow / limited air flow:

1. Check if filters need cleaning/replacing
2. Check if heat exchanger needs cleaning/replacing
3. Check if ducting has fallen off or has restrictions
4. Check that air intake is not blocked
5. Check if it is due to low fan speed setting on control panel or improper fan wiring at appliance terminal block or at control panel
6. Ascertain if both fan motors are functioning
7. Listen for abnormal fan noise and check for loose fan wheel or bearing problem
8. Contact Airconics for advice

Control panel display is blank:

1. Check if appliance has power
2. Check comms/control cable connections are correct at both ends
3. Check comms/control cable for damage (inspect for rodent or mechanical damage and confirm continuity of each core)
4. Contact Airconics for advice

Abnormal sound:

First, please listen closely to ascertain where sound is coming from

- If abnormal sound is coming from appliance casing

1. Check if appliance is securely mounted - nuts/fixings all tight
2. Check if appliance is levelled and not distorted/twisted

- If abnormal sound is coming from vibration through appliance to structure/framing

3. Install rubber isolating mounts to reduce vibration
4. Reinforce the structure or move appliance to a more sturdy location

- If abnormal sound is coming from fan(s)

5. Check if fans are over-worked due to blocked duct or clogged filters/heat exchangers
6. Check if fan mounting has become loose
7. Check for loose fan wheel or bearing problem

- If abnormal sound is coming from inside ducting

8. Check for loose material or duct "flapping" at joins
9. Check for restrictions in ducting (tight bends, collapsed/squashed etc)
10. Contact Airconics for advice

12. 5-Year Warranty Terms & Conditions

Warranty Statement

No part of these terms & conditions shall override any consumer protections as set out under the New Zealand Consumer Guarantees Act

This Airconics NZ warranty is valid only in NZ and applies to official Airconics brand residential ERV systems with a model number specified in this installation/user manual and purchased either via Airconics NZ directly or through an authorized reseller/distributor. Airconics NZ carries no responsibility or liability for any system purchased either second hand or outside of its authorized reseller/distributor network, or installed in any manner contrary to those outlined in the corresponding installation manual.

Appliance is warranted against failure from manufacturing defect or part failure for five (5) years from the date of installation which is to be verifiable via end user proof of purchase invoice/ESC/COC. In the event that the property in which the appliance has been installed is sold, the remainder of the warranty may be transferred to the new property owner provided the new property owner has been given a copy of the proof of purchase and followed maintenance procedures and other guidelines as set out in the installation and user manuals.

This warranty is for normal use only and excludes any defect or injury caused by, or resulting from misuse, abuse, neglect, accidental damage, improper power supply or voltage, vermin infestation, any alteration not approved in writing by Airconics directly, or any installation which does not follow the guidelines in the installation manual, not attributable to manufacturing defect or faulty parts.

Warranty Exclusions:

- a. Acts of God, misuse, negligence, natural disaster, environmental intrusion (including, but not limited to: Hail, Snow, Freezing, Lightning, Flood, Fire, High Wind)
- b. Rust or damage caused by corrosive atmosphere (including, but not limited to: Salt and Sulfur)
- c. Where installed in a manner contrary to the guidelines set out in the appliance installation manual or by persons not qualified to do so
- d. Where serviced in a manner contrary to the guidelines set out in the appliance installation manual or by persons not qualified to do so
- e. Where repaired in a manner contrary to the guidelines set out in the appliance installation manual or contrary to repair documents or instructions provided by Airconics, or without seeking those documents to follow, or where repaired by persons not qualified to do so
- f. Where unauthorised parts, filters or "add on" equipment are used
- g. Failure due to improper maintenance - refer to maintenance section of operating manual for requirements
- h. No fault found service calls where the perceived problem is explained within the Installation Manual or Appliance User Guide or Control Panel User Guide
- i. Consumable items (eg. Filters)
- j. Other parts or components required for installation but not supplied as part of the appliance package (including, but not limited to: ducting, air splitters, diffusers)
- k. Other connected equipment not manufactured by Airconics

If warranty service is required you should:

- a. Contact the original installer in the first instance
- b. Provide a copy of this Warranty Statement with the installation information at the bottom of this page completed, records of servicing & maintenance performed, and with a copy of proof of purchase

Installation Manual, User Guides & Warranty Statement should be retained by the end user at all times.

If you require any assistance regarding warranty conditions, or have any other enquiry please contact:

Airconics NZ
38 Lombard Street, Central, Palmerston North 4410
Phone: 06 354-9936 or 0800 Y B COLD
Email: patrick@airconics.co.nz

Purchase & Installation Particulars (please complete)

Model Number: _____

Serial Number: _____

Supplier Name & Address: _____

Supplier Phone: _____

Installer Name & Address: _____

Installer Phone: _____

Install Date: _____

Purchaser/Home Owner: _____

Address of Installation: _____

Please retain proof of purchase and store with this document to validate warranty.

Please keep maintenance or service work records on the following pages.

13. Maintenance, Service & Repair Record

Date: ____ / ____ / ____ Company: _____

Representative/Persons: _____ Contact Ph: _____

Details of work performed: _____

Date: ____ / ____ / ____ Company: _____

Representative/Persons: _____ Contact Ph: _____

Details of work performed: _____

Date: ____ / ____ / ____ Company: _____

Representative/Persons: _____ Contact Ph: _____

Details of work performed: _____

Date: ____ / ____ / ____ Company: _____

Representative/Persons: _____ Contact Ph: _____

Details of work performed: _____

Date: ____ / ____ / ____ Company: _____

Representative/Persons: _____ Contact Ph: _____

Details of work performed: _____

Date: ____ / ____ / ____ Company: _____

Representative/Persons: _____ Contact Ph: _____

Details of work performed: _____

Maintenance, Service & Repair Records

Date: ____ / ____ / ____ Company: _____

Representative/Persons: _____ Contact Ph: _____

Details of work performed: _____

Date: ____ / ____ / ____ Company: _____

Representative/Persons: _____ Contact Ph: _____

Details of work performed: _____

Date: ____ / ____ / ____ Company: _____

Representative/Persons: _____ Contact Ph: _____

Details of work performed: _____

Date: ____ / ____ / ____ Company: _____

Representative/Persons: _____ Contact Ph: _____

Details of work performed: _____

Date: ____ / ____ / ____ Company: _____

Representative/Persons: _____ Contact Ph: _____

Details of work performed: _____

Date: ____ / ____ / ____ Company: _____

Representative/Persons: _____ Contact Ph: _____

Details of work performed: _____

ATTENTION INSTALLERS

Please leave ALL supplied installation and user manuals with the end user. These may be required for future service/maintenance/repair work.

If further information is needed please visit
www.airconics.nz